

THIN-AIR BULLETIN

American Society of Heating, Refrigeration, and Air Conditioning Engineers NM Chapter Region IX Albuquerque, NM

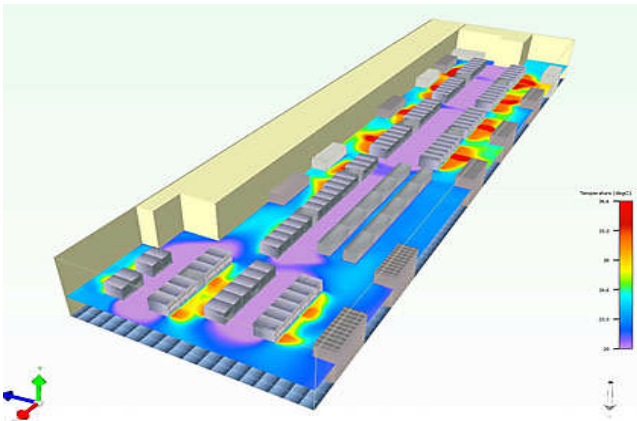
Program: Computational Fluid Dynamics at Pappadeaux

Please join us for a program on Computational Fluid Dynamics given by Heejin Park, PhD, PE.

January 15, 2013
Pappadeaux Seafood Kitchen
4538 McLeod NE,
Albuquerque, NM 87109

Heejin Park, PhD., PE leads the CFD division at Flonmix Inc. located in Portland Oregon. Park has applied CFD to HVAC and IAQ applications extensively and has assisted in the design of smoking lounges, chemical labs, theaters, casinos, atriums, data centers and parking structures.

RSVP to Morgan Royce at
mbroyce@bgce.com



President's Message

Well the world didn't end and our government may actually find a way to fund itself in 2013. Hopefully all had happy and safe New Years' celebrations.

We are starting off 2013 with an exciting program on Computational Fluid Dynamics for HVAC and IAQ applications. It should be an informative program.

In the coming months the Board of Governors will be participating in activities to promote ASHRAE at the STEM science Fair and at UNM's Spring HVAC Course.

If anyone is participating in Engineering Week activities next month or doing any engineering presentations to students please let us know. The Chapter receives recognition from ASHRAE at the Society level for our members' active involvement in promoting engineering in our community.

Patrick Watkins



WHEN: Tuesday January 15, 2013. 11:45. **COST:** \$20 for Chapter members; \$25 for non-members.
WHERE: Pappadeaux Seafood Kitchen, 5011 Pan American Fwy., Albuquerque, NM 87109; Albuquerque, NM

RSVP to Morgan Royce by Friday January 11th. Email: mbroyce@bgce.com

FROM THE HISTORY BOOKS

JANUARY 1971

Chapter Officers were:

President: Robert Friggens
President-Elect: Peter Lujan
Secretary: Paul Arnold
Treasurer: Bruce Cantrell



Mr. Frank Bridgers, ASHRAE Society President, introduced the speaker, Peter Lujan, Vice-President of Bridgers and Paxton Consulting Engineers. The subject of the meeting was "Heat Recovery Wheels Performance". Data was derived from systems installed at Anna Kaseman hospital in Albuquerque. He stated that the hospital has experienced 72% energy recovery efficiency on the heating cycle.

Mr. Lujan will present his paper at the ASHRAE Society Winter Meeting in January.



ASHRAE Research Promotion

Since 1919, ASHRAE has supported research to improve the quality of life. ASHRAE Research impacts the industry by improving the way HVAC&R systems work, how they are applied and allow development of technical information to create standards and guidelines, which serve as the basis for testing and design practices around the world.

Please contact Charlie Scoggin at charlie@nationalheat.com and Support research for the 2012-2013 Campaign.